

Photographs
Frank Anderson Bliley's
Family Album
1923–1939



Photographs



Josephine M. Bliley

UT

3rd to right
Josephine M. Bliley



Original Bliley Farm House
Kuhl Road, Harbor Creek Township, Erie, PA



Charles & Mary Jane Bliley's
Farm House, Station Road, Harbor Creek Township, Erie, PA



1936

Where my Mother was
born Nov. 19, 1852.

John Wilbur Lambing

Campbell
Bible
Bible
Bourange
Allen

Frank A. Biley
Lula
Dawson
Josephine

1923



Frank & Lula Bliley's House
649 West 9th Street, Erie, PA

Residence of
Frank A. Bliley
649 W. 9th St.
Erie, Pa.

Residence of
Frank A. Bliley
Feb. 2, 1920.

Rear

FRANK A. BLILEY,
ATTORNEY AT LAW
ERIE, PA.

School house
Frank A. Bliley
Cars' Corners
Station Road
July 1939

Picture Taken by
Ross A. Bliley



Samuel C. Wagner
John Wilbur Lambing

995

QUARTER
SILVERGL
PRINT

May 9, 1931

6/6/36

John Wilbur Lambing

3

Dawson + "New CA"

6120



Charles, Hulda & Harry Bliley
Grave of Alex Bliley
Mt. Pisgah Cemetery, Cripple Creek, Colorado



X
3

6120

6-30-39 3.30 P.M.

Taken in my back yard at
Lory, Pa., just 29 years, almost
to the hour, after Father's death.

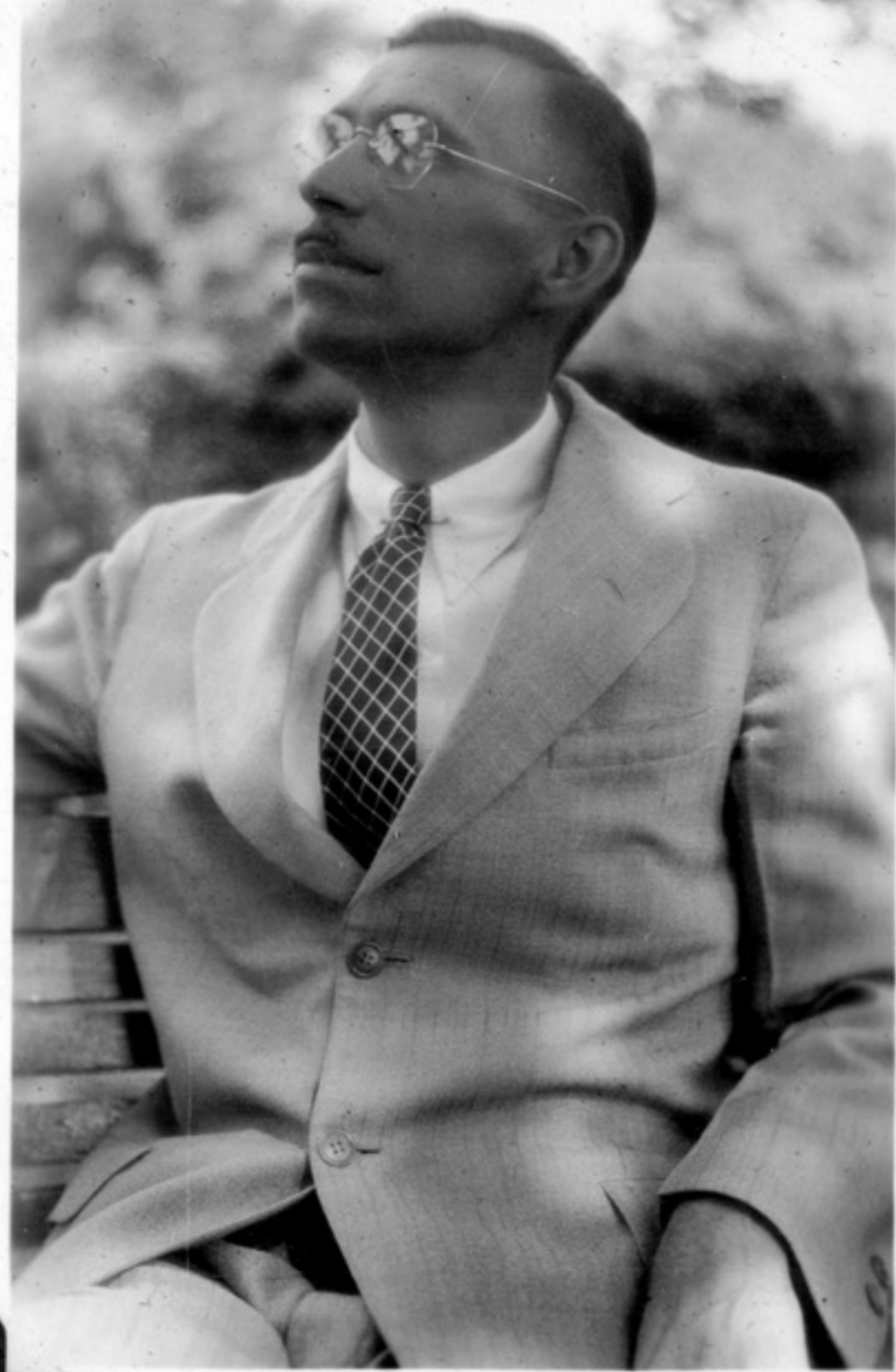
John Lumbing

Col Biley
Hulda Biley
H. Biley
Colorado

7-2-39

Three good bumps on a log!

J.W.L.



Frank Dawson Bliley

A

1901

Frank Dawson Bliley

1901

Frank Dawson Bliley



3

G. Malcolm Oldham
Josephine M. Bliley Oldham

6120

Mr. + Mrs. Frank A. Bliley

431

Mr. + Mrs. Frank A. Bliley
649 W. 9th St.
May 1934



G. Malcolm Oldham
Josephine M. Bliley-Oldham

12

OT

Josephine M. Bliley

AST

In the middle
Josephine M. Bliley



Josephine M. Bliley

LEFT

817

Silver

Josephine M. Bliley
later Oldham

2172

895

Frank Dawson Bliley



Right: Inee C. Wagner

Left: Mrs. Carlotta E. Moser,

Taken about 1918 in the Academy Bldg which
stood on the southeast corner of 19th and
French Streets, Epif., Pa.



08

Frank Dumas on Bliley

2nd from left
Josephine M. Bliley



June 2, 1923

Frank Dawson Biley

Josephine M. Biley
on bridge at Jordays
July, Hartman's Creek Prop.
Erie Co., Pa.

8



20



Chas. & Mary Jane Bliley's Farm, 1936

Knights
Templar
Erie

GI
SILVER
PRINT

622

Knights Templar
Erie, Pa

GI
SILVER
PRINT
622

Chas. Bliley farm

1936

622



5-27-28.

Sister Belle & I visiting
the scene of our Mother's
childhood school days.

Sorry I spoiled the picture
by scribbling.

John Wilbur Lambing
Belle C. Lambing

5-27-28.

I wonder how many
thousand times my dear Mother
went in & out of the gospel school
school house when she was a
child. Little did she dream then of
such a picture as this. There is
one trick near my right shoulder
which was badly displaced by some
young devilish student. Part of
it is covered in deep letters.

J. A. Bliley, 1881.

Ross A. Bliley
and son Harold

5-27-28.

School house & cemetery
on Gospel Hill. Part of
Present generations had
close association here, it
would seem.

5-27-28.

Gospel-Hill School House
where my beloved Mother
attended school, prior to the
days of the Civil War.

above written by
J. Wilbur Lambing



7-25-40

Mead Memorial
before unveiling
Youngsville, Pa.,
July 25, 1940.

Mead Memorial,
Youngsville, Pa.,
Frank A. Bliley
delivering the address
at unveiling.
July 25, 1940.

7-25-40

Mead Memorial
Youngsville, Pa.
unveiled
July 25, 1940.



1936

Jo Biley
(Mont. but!)



F. Dawson Biley

154

Ruth & Josephine
at camp.
I'd like this one
back.

Josephine M. Biley
right

II



Josephine M. Bliley Oldham

297

813L

Harry Bliley
Charles A. Bliley
Frank A. Bliley
1939

425



425

Frank Dawson on Bliley

23

A.1



Josephine M. Bliley
right

11

Frank A. Bliley
9th + State Sts,
Erie, Pa.

1935

21

Josephine Bliley Oldham



7-1-34 Taken by sister Barb's son,
John Wilbur Lambing

July 1, 1934.
Frank A. Bliley
at residence of his
Father prior to 1865

7-1-34

July 1, 1934
Residence of
Charles Bliley
prior to 1865.

7-1-34.

July 1, 1934
Residence of
Charles Bliley
prior to 1865

Residence of Charles
Bliley, father of
Frank A. Bliley, on
Kuhl Road prior to
1865.



Mead Memorial
Youngsville, Pa.
July 25, 1940.

016



KODATONE

EASTMAN KODAK STORES
CLEVELAND - YOUNGSTOWN

JUN 10 1940

Mead Memorial at Youngs-
ville, Warren Co., Pa.,
dedicated July 25, 1940.

696

Frank A. Bitley

in a

Bamboo

Forest

Savannah, Ga

Mar 1926
1936



Santivelli (2)

D Bailey

M Santivelli

Gloria Cortini

✓

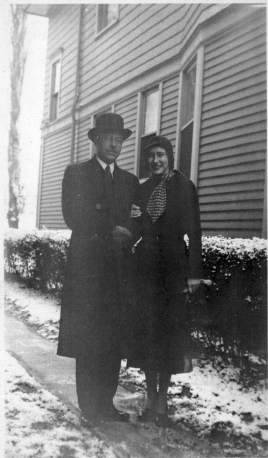
5-11-29

518 De Kalb Ave

B'klyn, N.Y.



David, Jean & Richard Bliley, C1943
In Front of Granparents Rosenberg House



12-26-31.

What a sweetheart!—

What a sweetheart!—

It's just too bad that

~~We~~ are cousins !!!

Every time I look at
this I want to kiss
that dimple.



Isabelle Rosenberg Bliley

This is the spot where we
would like to put a cottage
or cabin. It's the best
spot on the property. There's
a spring close by too.

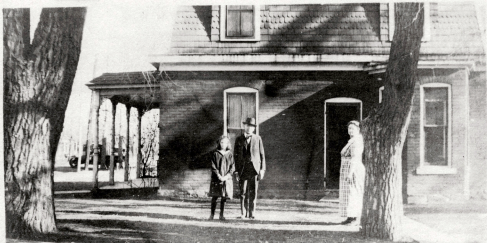
Grubb Road Paroperty
Millcreek Township, Erie County, PA



Frank Dawson Bliley

Dawson + "how CH" ✓

6120



Josephine, Frank A (Father) & Lula (Mother) Bliley
Grove Street, Boulder, Colorado Home
December 18, 1920

Handwritten signature

DEC 18 1920



Frank A. Bliley in Law Office, Erie, PA, March 1925 •

3/25

Baker Office



Frank Dawson Bliley



32

~~81~~



Al S. Lamb, Aspen, Colorado, 1938

#2 - Page 6.

Al S. Lamb, Aspen, Colorado.

1938

4



Harry Bliley, Cripple Creek, Colorado

Please return.

A. H. B. Biley

Cripple Creek,

Colo.

—



John W. Lambing
San Diego, California
August 1943

August 1943

22
56

Poinsettia bush partially
obscured by a Life Insurance
agent.

Paintings from San Diego.
J. W. Lambing



FALL RIVER LODGE AND RANCH — Estes Park, Colorado. A privately owned guest ranch seven miles west of Estes Park Village within the boundaries of Rocky Mountain National Park. Here guests may enjoy midst the Colorado Rockies horseback riding, hiking, trout fishing and motoring. Friendly Fall River Lodge is operated on the American Plan and caters especially to families.

Color by Clatworthy Colorvues.

EC-160

MISSO-KROME CARD BY H. S. BROCKER CO., INC., SAN FRANCISCO 1, CALIF.

address

*place
stamp
here*



Rocky Mountain National Park, Colorado

LEWISTON HOTEL.

The Lewiston Hotel stands upon a rocky knoll overlooking Estes Park Village. It is a very fine commodious resort and its commanding position makes it one of the best known hotels in the Estes Park Region.

— THE NATIONAL BUSINESS CARD CO., NEW YORK, N. Y. —

POST CARD

PLACE
ONE CENT
STAMP
HERE